

ORIGINAL INSTRUCTIONS TRANSLATED
ENGLISH EDITION, VERSION 03, APPLICABLE FROM 1 January 2016

PALLET TRUCK

STAINLESS STEEL

OPERATING INSTRUCTIONS
MAINTENANCE MANUAL
PARTS CATALOGUE
DECLARATIONS OF CONFORMITY



PALLET TRUCK - STAINLESS STEEL

BASIC INFORMATION

Manufacturer: Ole Almeborg a/s, Svalhøjvej 15, DK-3790 Hasle, Denmark,
tel. (+45) 5693 3600.
Designation: Pallet Truck, stainless steel, type MA-
Lifting capacity: 2.000 kg
Net weight: 82 kg

RECEIVING THE PRODUCT

On receipt of the product, it is important to inspect it immediately for any signs of damage that may have occurred in transit. If any damage is discovered, contact the distributor or supplier and do not use the pallet truck until the distributor or supplier has been notified about the damage and the extent of it.

MALFUNCTION AND DAMAGE

In the event of any malfunction or damage to the truck, contact the supplier or the distributor.

NOTE:

For safety reasons, all service and maintenance must be performed by a technician certified to do so.

BEFORE USING THE PRODUCT

The manual must be read and understood by the operator before he/she starts to use the pallet truck, as it is crucial for the operator to be familiar with the pallet truck's function, capacity and loading methods.



WARNING!

If the precautions specified are not followed, there is a risk of accidents which may entail severe bodily injury and could possibly be fatal.

TRANSPORTING THE PALLET TRUCK

To lift the pallet truck, attach authorised lifting equipment to the front crossbar or upper section. The lifting must be balanced by attaching straps to the fork tips. Note that, when lifting the pallet truck, the plunger shaft can be extended to its maximum length. This will not damage the pallet truck. For transporting the truck on a lorry, it is recommended that the truck be attached to an EUR-pallet.

PALLET TRUCK - STAINLESS STEEL

SAFETY EQUIPMENT

Safety footwear must always be worn when using the pallet truck. For service and repair, safety goggles/glasses must also be worn.

The operator must not wear loose objects such as necklaces, finger rings, a scarf, etc., as these can get caught in the truck, thereby exposing the operator to danger.

The pallet truck may be used for transporting pallets in an ordinary production environment.

PRODUCT DESCRIPTION

The truck is described as a pallet truck designed for transporting EUR-pallets. The pallet truck is designed for use in an ordinary production environment. The floor must be hard and level, e.g. concrete or asphalt. The user must make sure that the floor can support the pallet truck, including with its total maximum load.

USING THE PRODUCT

Permitted utilisation:

The pallet truck may be used for transporting pallets in an ordinary production environment.

Unacceptable utilisation:

The pallet truck may not be used as a scooter or for transporting people.

The pallet truck is stable on a level surface, but may not be used on angled surfaces where there is a risk that it could slide or tip over. In addition, the truck may not be used in very cold areas or in areas exposed to high temperatures as this could cause the pump to malfunction, thus exposing the operator or other people to danger.

HANDLING AND START-UP

Before using the truck, it is important for the operator to read and understand the user instructions.



OPERATOR'S POSITION

The operator must always position himself/herself in front of the towbar both during transport and when operating the pump.

WARNING DURING OPERATION

Check to see whether anyone is in the area where you are planning to use the pallet truck.

PALLET TRUCK - STAINLESS STEEL

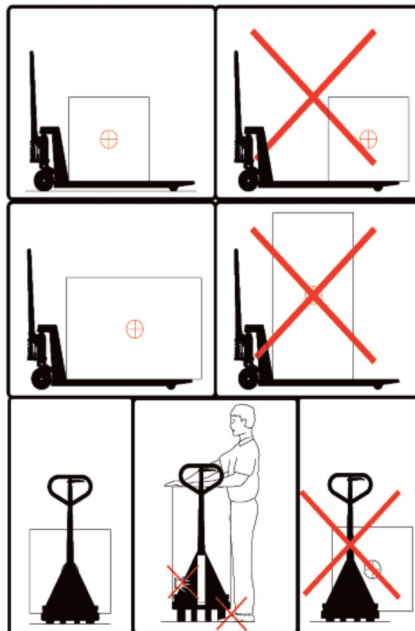


WARNING FOR OPERATING THE RAISING/LOWERING FUNCTION:

There is a risk of being crushed under forks and pallets. Make sure that no one else is nearby when lowering the truck. Always position your hands on the top of the handle when operating the truck and always use both hands to operate the truck.

THE LOAD

- Know and be aware of the weight of the load and how it is positioned, to ensure that the maximum load limit is not exceeded.
- Make sure the load is stable and correctly positioned on the forks. The pallet truck may only be operated with a load if the load is stable and secured, so that any loose objects cannot fall off. Do not convey tall loads on the pallet truck.
- Do not convey tall loads on the pallet truck.
- Be aware of the condition of the floor surface, i.e. whether it is even and smooth, whether there is an incline or a decline, as failing to observe this could cause a dangerous situation.
- Do not operate the pallet truck on catwalks or other unstable surfaces.
- Avoid high speeds when turning.



PALLET TRUCK - STAINLESS STEEL

OPERATING INSTRUCTIONS

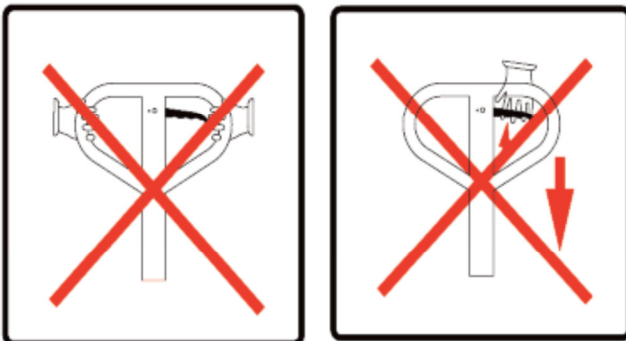
The pallet truck's towbar is also used as a pumping bar. A built-in valve enables the towbar to be placed in the desired position simply by slowly moving this.

If the operator wishes to lift the load, the towbar must be moved quickly. If the operator wishes to lower the load, pull carefully on the towbar's release lever, which activates this function. The adjustment of the lowering function is continuously variable. The upper section has been added to the drawing shown here, to indicate the above functions.



WARNING FOR OPERATING THE RAISING/LOWERING FUNCTION

There is a risk of being crushed under forks and pallets. Make sure that no one else is nearby when lowering the truck. Always position your hands on the top of the handle when operating the truck and always use both hands to operate the truck.



Always park the pallet truck with the forks in the lowest position. Always park the truck on an even, level surface to prevent it from unintentionally rolling into areas where it could endanger other people.

PALLET TRUCK - STAINLESS STEEL

INSPECTION AND MAINTENANCE



WARNING!

During service and maintenance, there is a risk of being crushed by movable parts of the truck. Be sure to correctly chock the truck in a stable location while servicing it, to prevent sudden movements of the truck.

DAILY INSPECTION

For safety reasons, the operator should inspect the truck on a daily basis for wear and damage.

Special attention is drawn to the following components:

- Loose axles caused by damaged bolts, nuts or tubular pins
- Ruptures or cracks in the chassis
- Ruptures or cracks in the towbar
- Bent compression bars
- Wheels and auxiliary rollers must be intact and must be able to rotate freely
- Make sure no cloths, strip waste or other items are wound around the hub of the wheel or auxiliary rollers.

WEEKLY INSPECTION

For continuous operation, all movable parts should be inspected and lubricated with SAE 30 motor oil at least once a week. Ordinary bearing grease should be injected into the lubrication points equipped with a grease nipple.

MONTHLY INSPECTION

Check the level of oil in the hydraulic system once a month. If the pump lacks oil, this is usually discovered from oil residue on the truck or when the truck cannot be pumped up to the top position.

OIL

The hydraulic system contains 0.25 litres of oil. Replenish with oil at the top of the pump housing. at temperatures between -35°c and $+40^{\circ}\text{c}$, use oil certified to ISO 32 with a viscosity index of at least 150.

For continuous operation at lower temperatures, it may be advisable to use a thin low-temperature oil.

LUBRICATING THE TOWBAR

On the towbar, lubricate the release chain, the pin on the release lever and the pin at the lowering valve lever.

PALLET TRUCK - STAINLESS STEEL

INSPECTION AND MAINTENANCE PLAN

	Daily	Weekly	Monthly
Cleaning	•		
Inspect for damage and ruptures	•		
Lubrication		•	
Oil level, pump			•

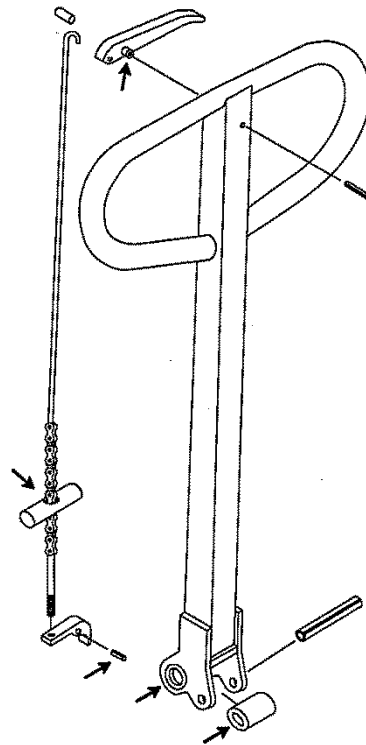
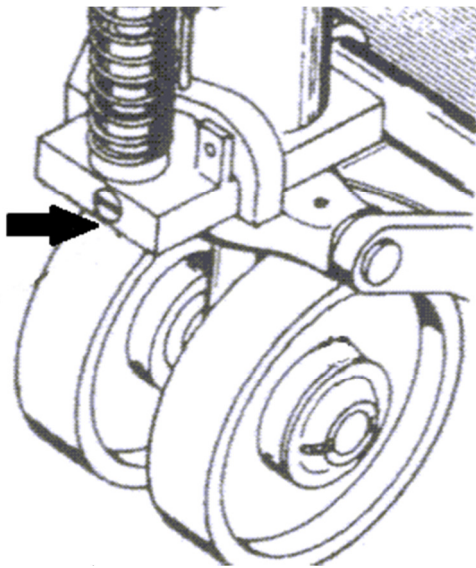
LUBRICATING THE PUMP TOWBAR

NOTE:

To achieve correct lifting and lowering, the chain drive in the towbar must be preset so there is 0.4 mm (± 0.1 mm) between the release pin and the lowering-valve lever, regardless of where the towbar is positioned.

Oil lubrication →

Grease lubrication →

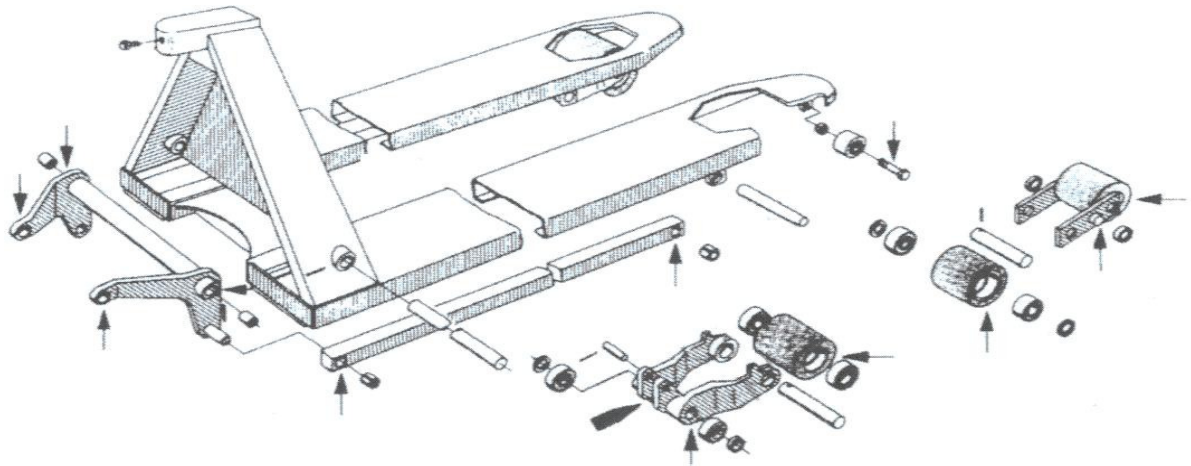


PALLET TRUCK - STAINLESS STEEL

LUBRICATING THE CHASSIS

Oil lubrication→

Grease lubrication→



CLEANING

The environment in which the truck is used determines the cleaning frequency. It is recommended to assess the need for cleaning based on the current rules in the company. The pallet truck can be cleaned with warm water and automobile detergent or similar. After cleaning, wipe down the truck and lubricate the movable parts (see the section concerning maintenance and lubrication).

DISPOSING OF THE TRUCK

The pallet truck, this must be disposed of in accordance with applicable rules at the time of disposal. Contact your local environmental station for further details, if necessary.

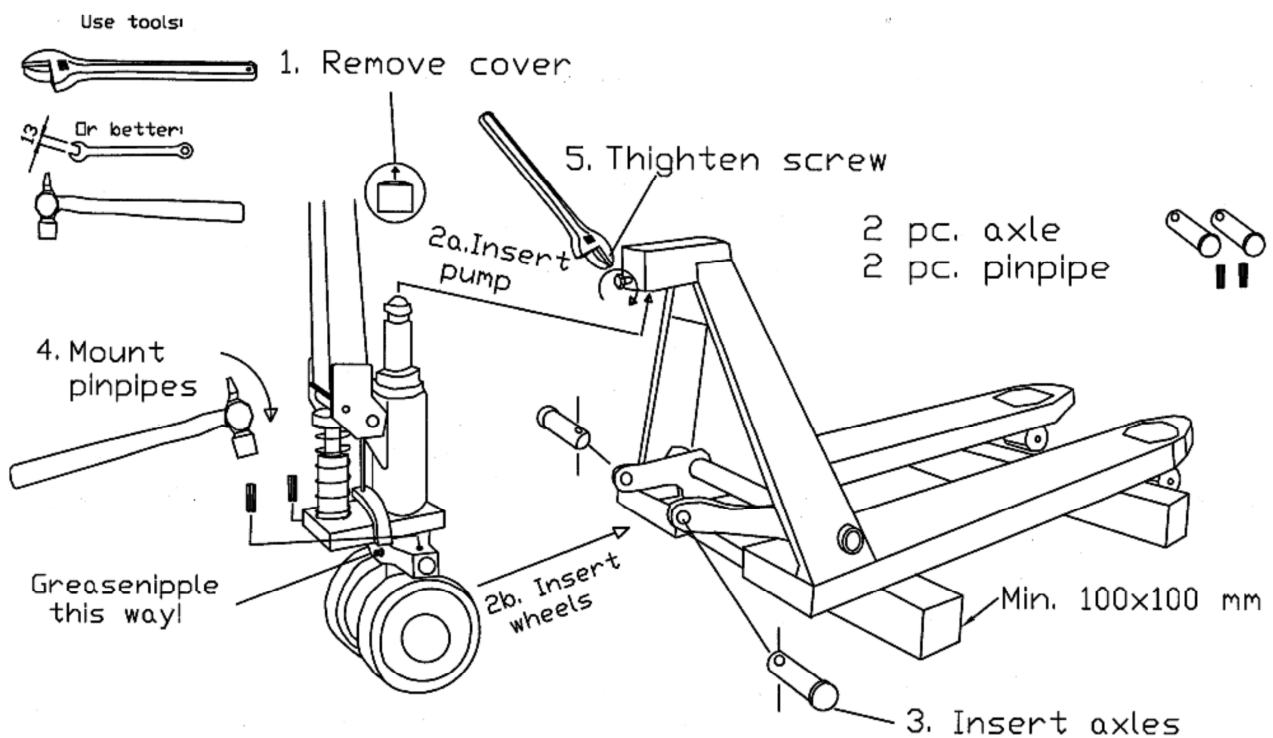
THE TRUCK CONTAINS THE FOLLOWING MATERIALS

- Chassis: stainless steel
- Towbar: stainless steel
- Lever arms: stainless steel
- Wheels: nylon, polyurethane or rubber
- Bearings: stainless chrome steel
- Bushings: polyacetal, nylon, brass
- Pump housing: stainless steel, hydraulic oil, polyacetal, nylon, copper, steel containing chromium, stainless steel, polyurethane and nitrile rubber.

PALLET TRUCK - STAINLESS STEEL

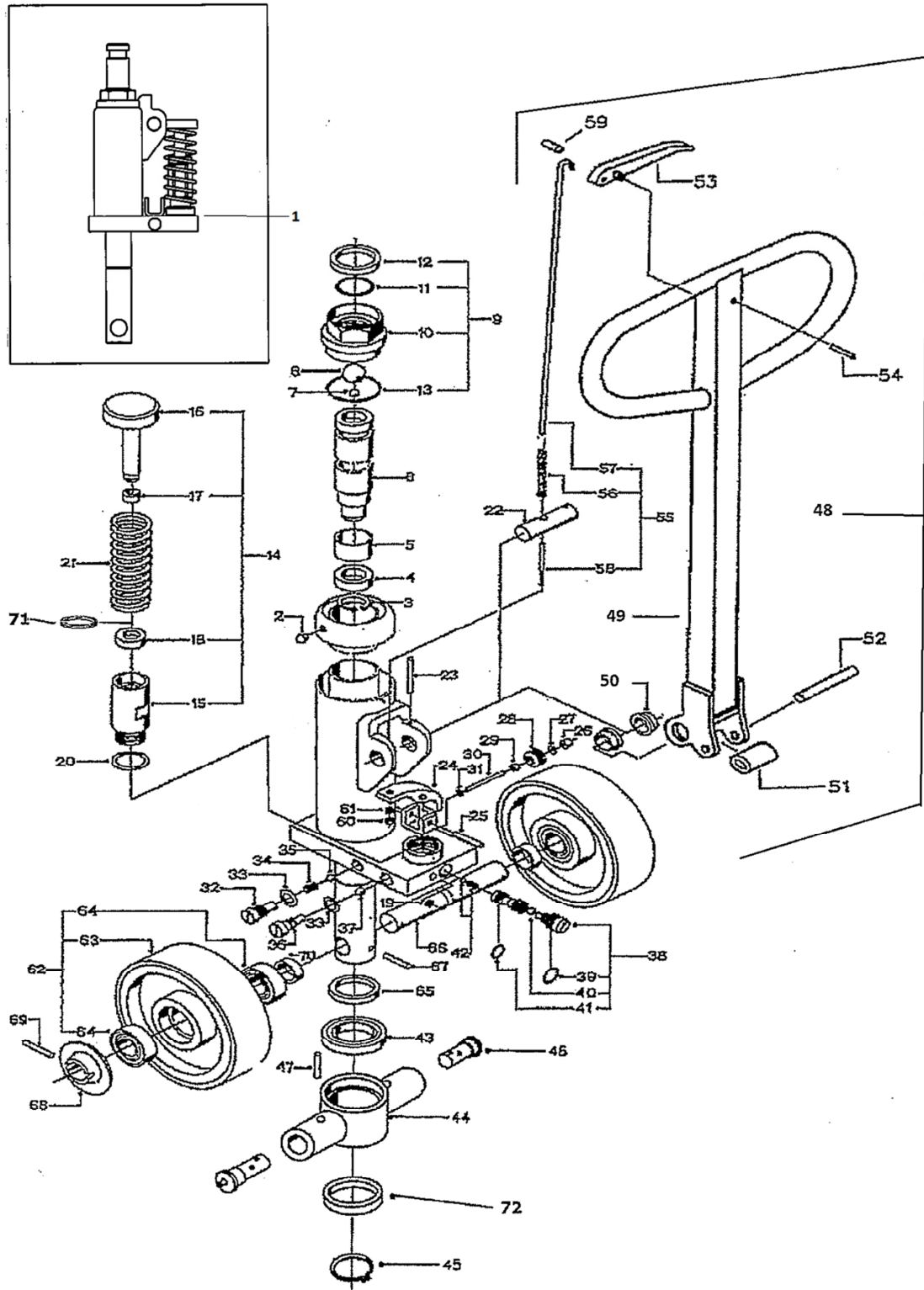
ASSEMBLY PROCEDURE FOR PALLET TRUCKS PACKAGED FOR EXPORT

- Place the pallet truck on solid chocks (minimum height: 100 mm)
- Remove the protective cover from the piston and place the piston under the thrust pad/upper section.
- Place the crossbar between the lever arms and insert the axles.
- Insert pins into the axles.
- Tighten the screw in the thrust pad/upper section.
- Remove the chocks and pump the towbar a few times to bleed the hydraulic system.
- The pallet truck is now ready for use



PALLET TRUCK - STAINLESS STEEL

PARTS LIST FOR PALLET TRUCK, STAINLESS STEEL MODEL: PUMP ASSEMBLY



PALLET TRUCK - STAINLESS STEEL

PARTS LIST FOR PALLET TRUCK, STAINLESS STEEL MODEL: PUMP ASSEMBLY

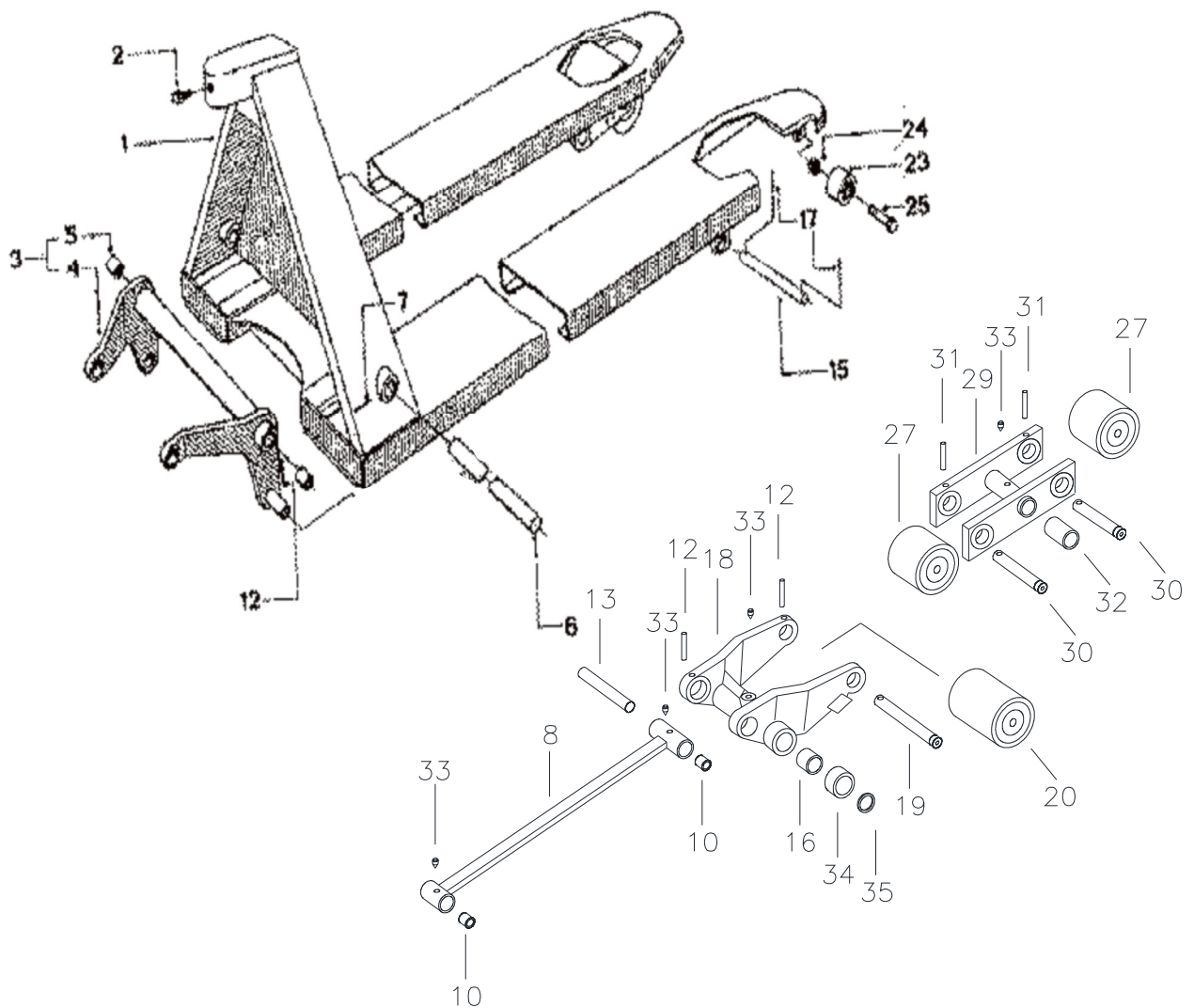
Item	Item no.	Qty	Designation
0			
1	605.118	1	Pump assembly W/valves & pistons
2	400.030+	1	Slotted screw
	11.15-50.291	1	Duboschweitzer lock no. 305/M10
3	04.02-50.037	1	Lock ring
4	452.040	1	Piston seal
5	456.008	1	Bushing
6	601.084	1	Piston
7	451.067	1	Ball, Ø 12 mm
8	451.068	1	Ball, 1"
9	622.288	1	Union nut, completet
10	NSS	1	Union nut
11	452.045	1	O-ring
12	20066	1	Scraper ring
13	452.065	1	O-ring
14	621.027	1	Pump cylinder/piston , completer
15	601.128	1	Pump cylinder with sealing Pos 15, 18, 20, 71
16	601.069	1	Pump piston with sealing Pos 16 & 17
17	452.095	1	U-sleeve
18	452.056	1	Scraper ring
19	452.101	1	Expander
20	452.049	1	Copper ring
21	403.058	1	Spring
22	412.132	1	Axle
23	402.170	1	Tubular pin, Ø 5 x 70 mm
24	502.205	1	Valve arm
25	402.204	1	Tubular pin, Ø 8 x 30 mm
26	452.051	1	Rubber bushing
27	401.142	1	Washer
28	400.063	1	Valve screw
29	452.042	1	U-sleeve
30	410.059	1	Lowering valve pin
31	452.076	1	Cloverleaf ring
32	400.200	1	Collar screw
33	689	1	Sealing ring
34	403.063	1	Valve spring
35	451.046	1	Ball, Ø 8 mm
36	400.215	1	Collar screw
37	451.065	2	Ball, Ø 9 mm
38	622.268	1	Insert
39	452.095 +	1	Sleeve +
	11.15-50.017		O-ring
40	NSS	1	Ball, Ø 7 mm
41	452.097	1	O-ring

PALLET TRUCK - STAINLESS STEEL

Item	Item no.	Qty	Designation
42	622.166	1	Chamber and spring
43	451.071	1	Thrust bearing
44	453.013	1	Crossbar
45	402.186	1	Lock ring
46	622.287	2	Axle neck
47	402.135	2	Tubular pin, Ø 6 x 36 mm
48	622.333	1	Towbar assembly
49	597.065	1	Towbar
50	457.030	2	Bushing
51	436.020	1	Roller
52	402.166	1	Tubular pin, Ø 10 x 80 mm
53	405.017	1	Release lever
54	28569	1	Tubular pin, Ø 5 x 30 mm
55	622.314	1	Chain assembly
56	402.215	1	Chain
57	66636	1	Valvebar, long
58	413.059	1	Threaded rod, short
59	165194	1	Tube
60	400.207	1	Nut
61	401.140	1	Washer
62	315.014	2	Polyurethane wheel, with bearing
62	315.003	2	Rubber wheel, with bearing
62	365.046	2	Nylon wheel, with bearing
63	NSS	2	
64	451.062	4	Bearing
65	401.160	1	Spacer ring
66	412.128	1	Steering wheel axle
67	402.173	1	Tubular pin, Ø 8 x 40 mm
68	440.710	2	Stop ring
69	402.109	2	Tubular pin, Ø 6 x 40 mm
70	401.117	2	Spacer ring
71	402.207	1	Locking ring
72	401.173	1	Spacer ring
	452.121	1	Washer set
			NSS = Not sold separately

PALLET TRUCK - STAINLESS STEEL

PARTS LIST FOR PALLET TRUCK, STAINLESS STEEL MODEL: FRAME ASSEMBLY



PALLET TRUCK - STAINLESS STEEL

PARTS LIST FOR PALLET TRUCK, STAINLESS STEEL MODEL: FRAME ASSEMBLY

Item	Item no.	Qty	Designation
1	NSS		Frame
2	400.210	1	Bolt
3	622.274	1	Lever arm, front, 520
3	622.275	1	Lever arm, front, 685
4	NSS		
5	47167	2	Bushing 520
5	47167	2	Bushing 685
6	412.133	1	Lever arm axle 520
6	412.131	1	Lever arm axle 685
7	402.167	3	Tubular pin, Ø 5 x 36 mm
8	504.215	2	Compression bar x fork length
10	47117	8	Bushing
12	402.165	4	Tubular pin
13	18-05-030	2	Axle
15	131676	2	Axle
16	51805	4	Bushing
17	402.167	4	Tubular pin
18	18-05-012	2	Lever arm, rear
19	18-05-011	2	Axle
20	167598	2	Nylon wheel, with bearing
20	167615	2	poly wheel, with bearing
21	NSS	2	
22	210.061	4 or 8	Bearing
23	365.004	2	Fork nose wheel
24	400.208	2	Lock nut
25	400.209	2	Bolt
27	167613	4	Nylon wheel boogie inkl. leje
27	167612	4	Poly wheel boogie, with bearing
29	18-05-014	4	Boogie
30	49884	4	Axle
31	402.168	4	Tubular pin,
32	18-05-026	4	Bushing
33	404.139	8	Lubricating nipple
34	159280	4	Roller
35	401.146	4	Washer
			NSS = Not sold separately

PALLET TRUCK - STAINLESS STEEL

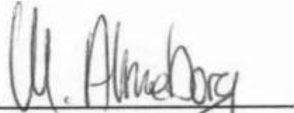
COMPLIANCE STATEMENT:

EU DECLARATION OF CONFORMITY, ENGLISH VERSION (uk)

The undersigned – Ole Almeborg a/s, Svalhøjvej 15, DK-3790 Hasle, Denmark, tel. (+45) 5693 3600, www.almeborg.com – hereby declares that this machine has been manufactured in conformity with the relevant provisions of the Machinery Directive, 2006/42/EC, of 17 May 2006.

Product name: Pallet Truck
Model: Stainless steel
ID no.: MA-XXX

Surname: Almeborg
First name: Michael
Position: Director
Hasle, Bornholm, DK / 1. January 2016



Michael Almeborg
Adm. direktør

