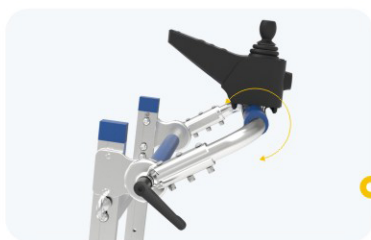


# ELECTRIC STAIR CLIMBER CT420C

- Automatic
- Safe
- Heavy Duty



# ELECTRIC STAIR CLIMBER CT420C



## Adjustable Handle

Rotate to Adjust Handler Angle



## Belt Fixed Mobile Beam

Used For Fastening The Belt and The Height is Adjustable



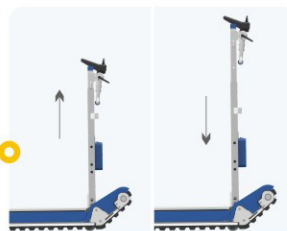
## Loading Plate

Adjust The Loading Angle Automatically and Secure the Cargo In Balance



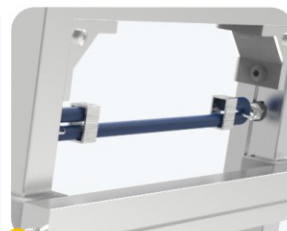
## Joystick Controller

One Finger Control From One Mode to Another With Specific Wire Control



## Vertical Beam

Telescopic Adjustment Of The Vertical Beam Height



## Vertical Beam Adjustment String

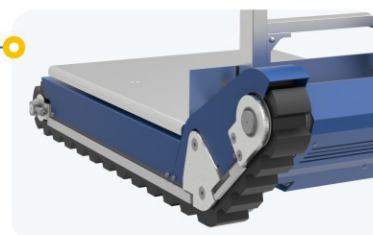
Drag The String to Adjust The Vertical Beam Height

## Battery Pack

Play & Plug With Auto Connection, Independent Switch, Display Battery Level and Voltage

## Universal Wheel

Easy to Push and Manoeuvre



## Crawler Track

Independent, Non-slipping & Non-marking



Loading Up to 420KG  
On Flat Surface And Stairs



Manoeuvring In  
Narrow Space

## ALL IN ONE WIRE CONTROLLER



Function Display Screen

Multi-functional

Omnidirectional Joystick

## Functional Buttons Instruction



Power Switch



Speaker



Decrease Speed



Mode Switch



Increase Speed



Support Wheel Auto On/Off

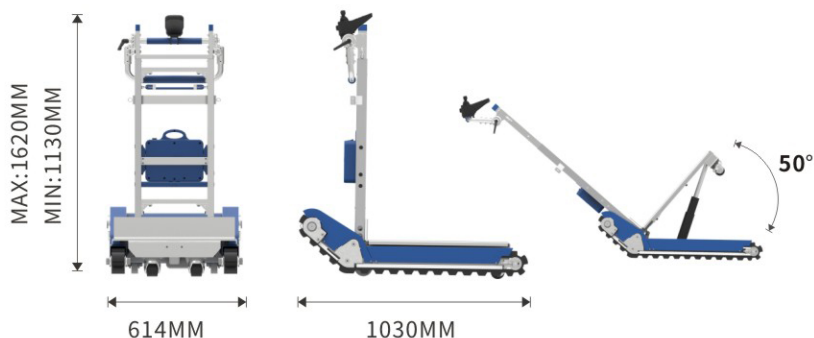


This button is a dedicated function key for CT420SC product, it is not valid for other products!

# ELECTRIC STAIR CLIMBER CT420C

## TECHNICAL PARAMETER

Model	CT420C
Maximum Capacity	420KG
Item Weight	94KG
Battery Capacity	1400-1600 Steps (78~100 Floors)
Upstairs Speed	High Speed:14.6 Steps/Min
Downstairs Speed	1High Speed:15.4 Steps/Min
Motor	DC Motor 24V 200W*2
Noise	<70dB
Protection Grade	IP54
Step Requirement	Height<21CM
Minimum Platform Size	1500x1500MM (Stairs Corner)



## ACCESSORIES



**Battery Pack**

Parameters: 25.2V 17AH

Weight: 3.1KG



**Charger**

Input: AC100-240V

Output: DC29.4V 4A



**Adjustable Safe Belt**

Length: 6000MM

Width: 55MM



**Height Adjustable  
Mobile Beam**

Adjustable Installation Height

## OPTIONAL FIXTURE



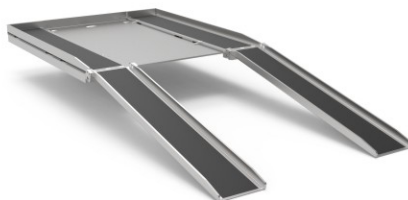
**Ramp ZX400**

Size: 1050x687x633MM

Load Capacity: 520KG

Net Weight: 19.6KG

Rise of LoadingBoard: 600-800MM



**Photocopier Delivery CT420.AE/P**

Load Capacity: 250KG

Net Weight: 14KG

Applicable Cargo Size: >750MMx750MM

Minimum Ground Clearance: >12MM



**Electric Mini Lift ELS420**

Load Capacity: 420KG

Net Weight: 9KG

Minimum Cargo Width: >790MM

Rminimum Ground Clearance: >12MM



# ELECTRIC STAIR CLIMBER CT420C

## APPLICATION SCENARIO



## APPLICATIONS



Precision Instrument



Furniture and Appliance



Office Equipment



Vending Machine



Electronic Equipment



Oil Drum



***Ease Your Way To Anywhere***