

# **Instruction Manual**

## **HIGH LIFT PALLET TRUCK**

**CAPACITY: *1000kgs***

**Note:** Owner/Operator must read and understand this instruction manual before operating the truck.

## Specifications

Model	HB1056M	HB1068M
Rated capacity	1000 kgs	
Lifting height	800 mm	
Height of lowerd fork	85 ±2 mm	
Fork length	1190 mm	
Width across fork	560 mm	680mm
Steer wheel	Ø180×55mm	
Front load roller	Ø75×75mm	
Pump times	Quick: 28/Slow: 62	
Descending speed	≤0.1 mm/second	
N.W.	128kgs	133kgs

### **NOTE:**

*Two speeds (quick and slow) can be automatically changed while load is more than 150kgs.*

## Safety Instructions

1. The truck shall be used in accordance with the instruction manual.
2. Don't put hand & foot underneath the fork at any time.
3. Don't work on a slope surface.
4. Quick lifting is prohibited for load of more than 150kgs. Any manipulation of the pressure relief valve is strictly prohibited. All assembling, adjusting and maintenance shall only be performed by qualified people.
5. Load should be put on the fork center. Side-load is strictly prohibited.
6. The truck shall not be used to transport persons.
7. It is recommended for the driver to wear security shoes.
8. No modifications shall be carried out which adversely affect the compliance of the truck with prEN 1757-4.

# Installation & Adjustment

## 1. Screw (Part No.132)

- To prevent oil-leaking from oil tank during transportation, Air Screw (Part No.132) is replaced by Oil-sealing Screw in factory. But it has to be replaced back when you put this truck into use.
- How to change: Take off Oil-sealing Screw, then screw Air Screw in, thus keep oil tank always connecting with atmosphere.

## 2. Handle

During transportation, the handle is disassembled from the truck and packed separately. It has to be assembled back and adjusted properly and carefully before use.

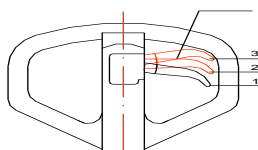
### Handle installation

- Take off screw (33) & pin (32).
- Assemble the handle on the Handle Base with 2 pieces of screw (33) & pin (32).
- Press the handle, and take off the hooked plate (60).

### B. Handle adjustment

- There are 3 different positions with different functions for the Release Lever (Part No. 49).

Release Lever(No.49)



Position 3

Position 2

Position 1

Picture 1

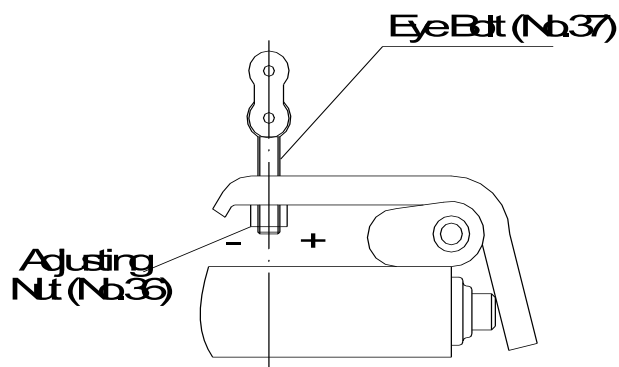
Position 1: Lifting for fork

Position 2: Neutral for fork

Position 3: Descending for fork

- Test different functions by putting the Release Lever in 3 different positions respectively. If it does not function properly, then adjusting Lock Nut (No.36) by following process.

See Picture 2.

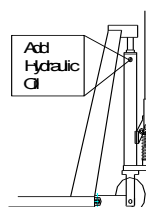


Picture 2

Problems	Turning direction of Lock Nut
Fork not lifted up	– (clockwise)
Fork not lowering down	+ (Counter-Clockwise)

3. How to release the air from the pump.

See picture 3



Picture 3

When pushing the handle down, the fork can't be lifted instantly. Please loosen the Screw (No.130) on the pump while pushing the handle down slowly to release the air from the pump. Then tighten the screw.

#### 4. When to add oil

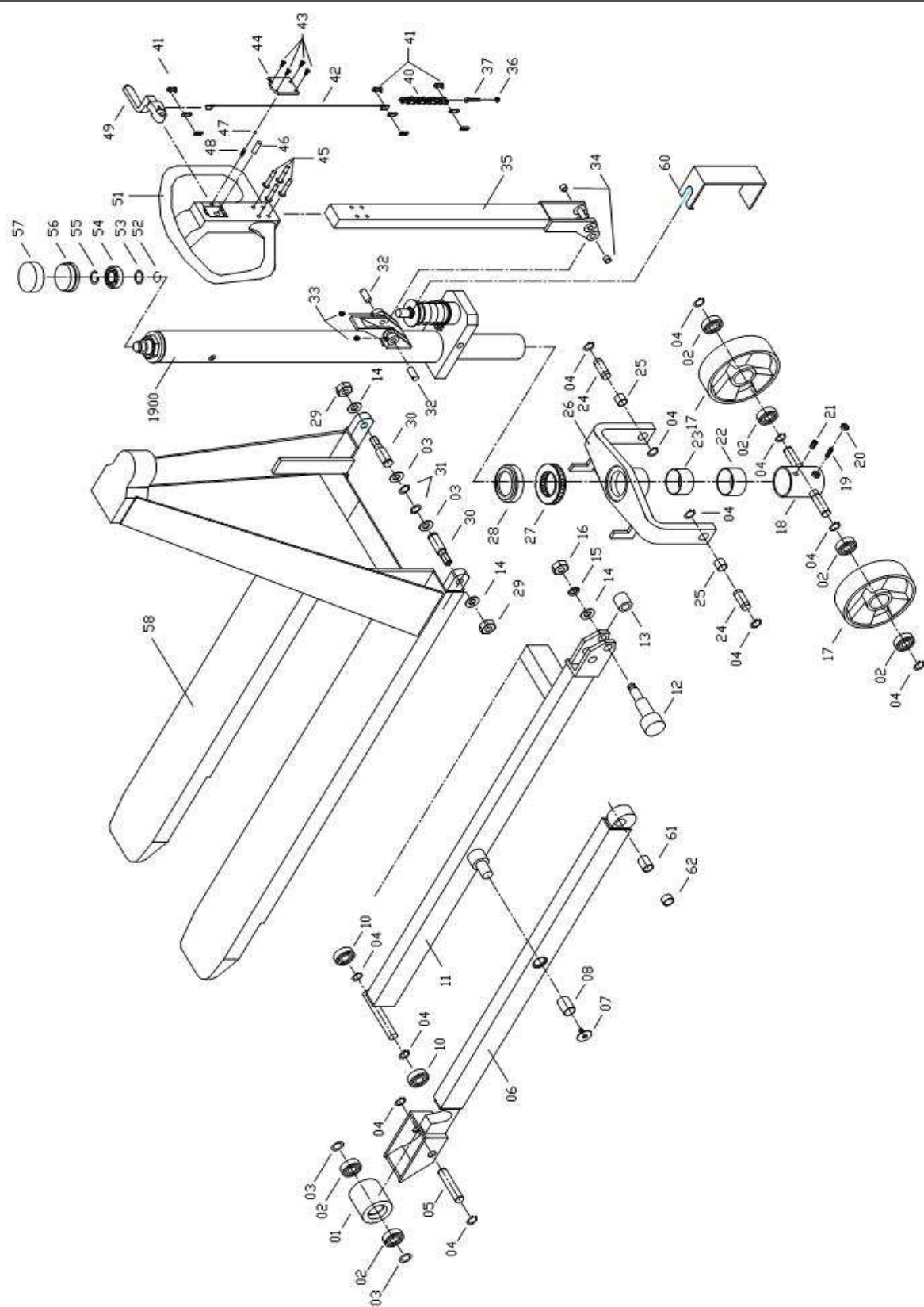
See Picture 3

If the fork can't be pumped up to its rated highest position, you may have to add hydraulic oil into the oil tank. The hydraulic fluid to be used must have a quality of ISO VG22 or equivalence. Mixing of different fluids is prohibited!

### TROUBLE SHOOTING GUIDE

Items	Symptom	Possible cause	Aliments
1	Fork can not be pumped up	1. Low oil level in oil tank. 2. Exist air in the hydraulic system. 3. Pendulum arm nut is not adjusted properly.	1. Add proper hydraulic oil. 2. Fast operating the handle for several times. Bleed the system. 3. Adjust pendulum arm screw. (See Picture 2)
2	Fork can't be released down	1. Fork blocked. 2. Pendulum arm nut not adjusted properly.	1. Check and remove the block. 2. Adjust pendulum arm nut properly. (See Picture 2)
3	Fork can't be pumped up to rated highest position.	Oil is not enough.	Add hydraulic oil. (See Picture 3)

### Exploded Figure & Parts List

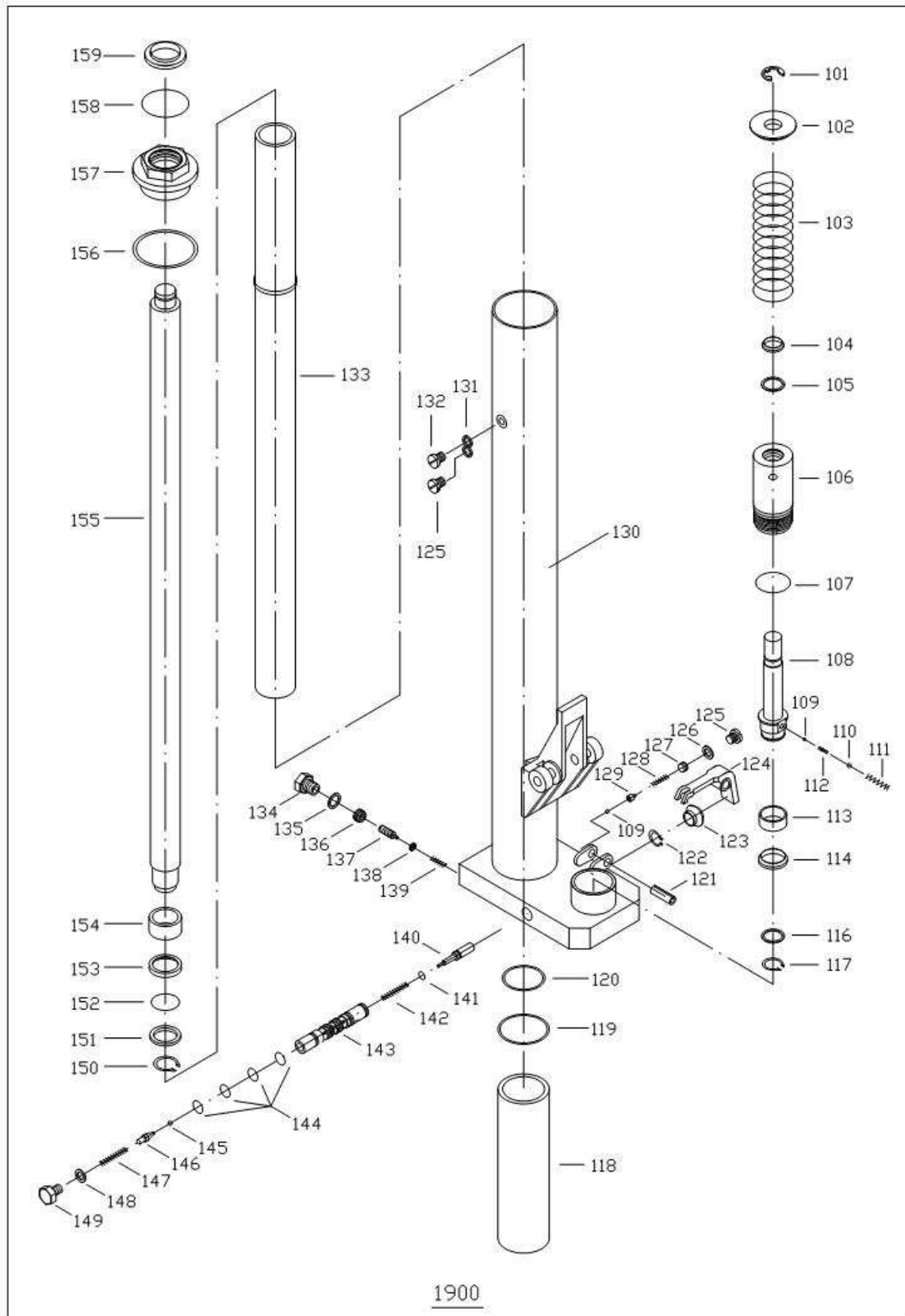


*Figure 1: Frame*

Item No.	Description	Remark
01	Front Wheel	2
02	Ball Bearing	8
03	Washer	6
04	Snap Ring	16
05	Pin	2
06	Leg	2
07	Screw	2
08	Washer	2
09	Washer	2
10	Ball Bearing	4
11	Leg	1
12	Centrifugal Axle	2
13	Bush	2
14	Washer	4
15	Bush	2
16	Nut	2
17	Steering Wheel	2
18	Wheel Yoke	1
19	Screw	2
20	Nut	2
21	Screw	3
22	Spacer	1
23	Bush	1
24	Pin	2
25	Bush	2
26	Hold Yoke	1
27	Ball Bearing	1
28	Spacer	1
29	Nut	2
30	Pin	2
31	Snap Ring	2

32	Pin	2
33	Screw	2
34	Bush	2
35	Handle Tube	1
36	Nut	1
37	Eye Bolt	1
40	Chain	1
41	Chain Connector	3
42	Release Rod	1
43	Screw	6
44	Cover	1
45	Pin	6
46	Pin	1
47	Ball	1
48	Spring	1
49	Release Lever	1
51	Handle	1
52	Retaining Ring	1
53	Washer	1
54	Ball Bearing	1
55	Snap Ring	1
56	Spacer	1
57	Spacer	1
58	Fork	1
60	Hooked Plate	1
61	Spacer	2
62	Spacer	2





*Figure 2: Pump Assembly*

Item No.	Description	Remark
----------	-------------	--------

101	Retaining Ring	1
102	Spring Seat	1
103	Spring	1
104	Wiper	1
105	Y-Ring	1
106	Pump	1
107	O-Ring	1
108	Plunger	1
109	Ball	2
110	Ball	1
111	Spring	1
112	Spring	1
113	Bronze Bush	1
114	Retaining O-Ring	1
116	Washer	1
117	Snap Ring	1
118	Cylinder Bush	1
119	O-Ring	1
120	O-Ring	1
121	Pin	1
122	Snap Ring	1
123	Rubber Sleeve	1
124	Pendulum Arm	1
125	Screw	2
126	O-Ring	1
127	Screw	1
128	Spring	1
129	Ball Seat	1
130	Pump Housing	1
131	O-Ring	1
132	Screw	1
133	Cylinder	1
134	Screw	1

135	Seal Ring	1
136	Screw	1
137	Screw	1
138	Plate	1
139	Spring	1
140	Release Indicator	1
141	O-Ring	1
142	Spring	1
143	Valve Insert	1
144	O-Ring	4
145	Ball	1
146	Release Valve	1
147	Spring	1
148	Seal Ring	1
149	Screw	1
150	Snap ring	1
151	Washer	1
152	O-Ring	1
153	Retaining O-Ring	1
154	Piston	1
155	Piston Rod	1
156	Seal Ring	1
157	Cylinder Nut	1
158	O-Rind	1
159	J-Wiper	1